

WALLS

MASONRY WALL

MASONRY WALL BATTENS

For Internal Applications

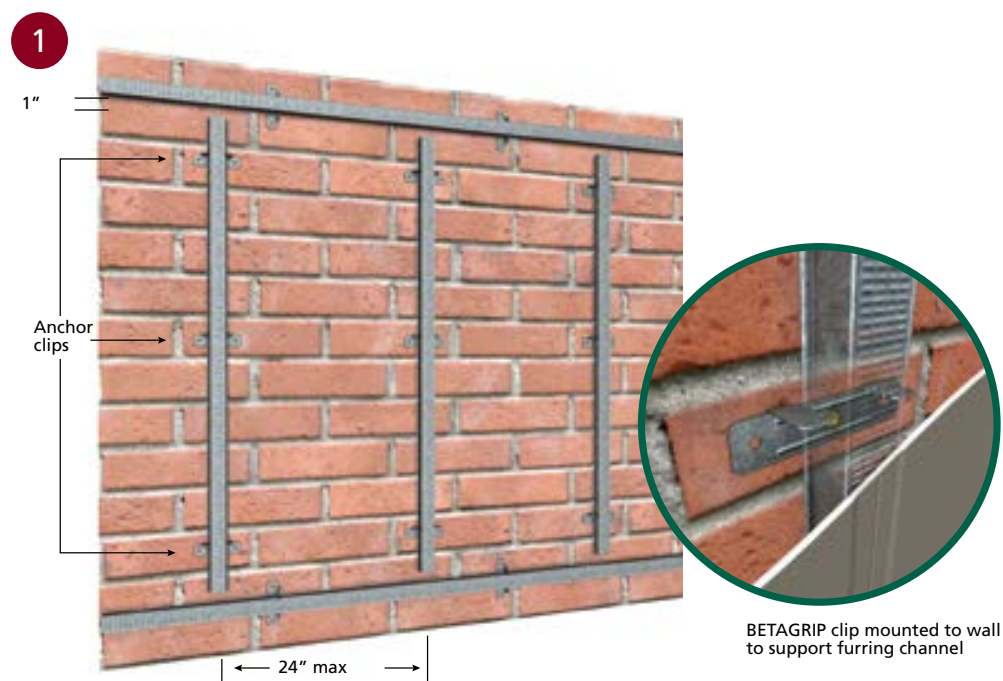
Judah Furring Channels and adjustable clips are the ideal combination for battening out irregular walls, ready for the fixing of building boards. Furring Channels with an adjustable clip will correct irregular surfaces of 1" (refer Figure 1).

For surfaces which do not require any alignment but require a cavity for cables or plumbing, Judah Batten 333 can be used.

Clips should be spaced in accordance with Table 1.

Clips may be of the adjustable or acoustic type as shown previously, depending on the application.

Masonry fasteners should be selected in accordance with the manufacturer's recommendations.



■ MASONRY WALL BATTENS

TABLE 1: MAXIMUM ANCHOR SPACING

FURRING CHANNEL	CLIP SPACING (mm)
333	35"
308	35"
129	47"

NOTE: The above spacings are the maximum recommended installation requirements. This may not be suitable for high traffic areas or external applications.

MASONRY WALL INSTALLATION WITH MEMBRANE INSULATION

Direct Fix Furring Channel Clips for Internal Applications

Judah produces two clips to assist the application of single or double layer reflective membrane insulation on masonry or concrete walls which are to be lined with building board that is fixed to Furring Channel.

282 DIRECT FIX CLIP

This clip suits single membrane applications, which require a 1" air space between the inside face of



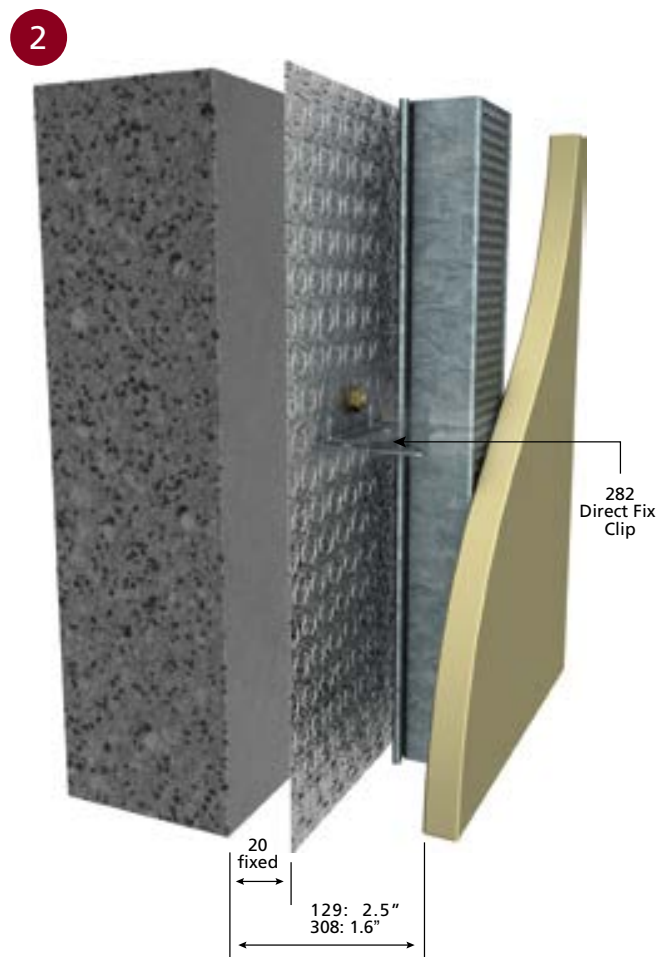
the structure and the membrane.

The 129 or 308 Furring Channel is then installed by clipping into the 282 Direct Fix Clip (see Figure 2).

This then provides a second air space between the inside of the board and the insulation.

The 282 Direct Fix Clip is non-adjustable and therefore more suited to tilt-up panel construction.

If adjustment is required, the clip must be 'packed out'. An alternative would be to use either Judah BG01 or BG02 BETAGRIP® clips which offer adjustment of the Furring Channel but do not facilitate the air space which would have to be achieved by the use of plastic spacers provided by the insulation manufacturer.



■ 282 DIRECT FIX CLIP IN SITU

BG05 BETAFIL® CLIP

The introduction of more stringent thermal insulation standards has resulted in the use of double layers of reflective insulation being specified on some projects.



The Judah BETAFIL® Clip effectively provides the three air spaces; structure to insulation, between insulation layers and then between the outer insulation layer and board (see Figure 3).

It should be noted that the space between the two layers of insulation is produced by the installer fixing plastic spacer blocks, as illustrated, onto the clip. The spacers are supplied by the insulation manufacturer.

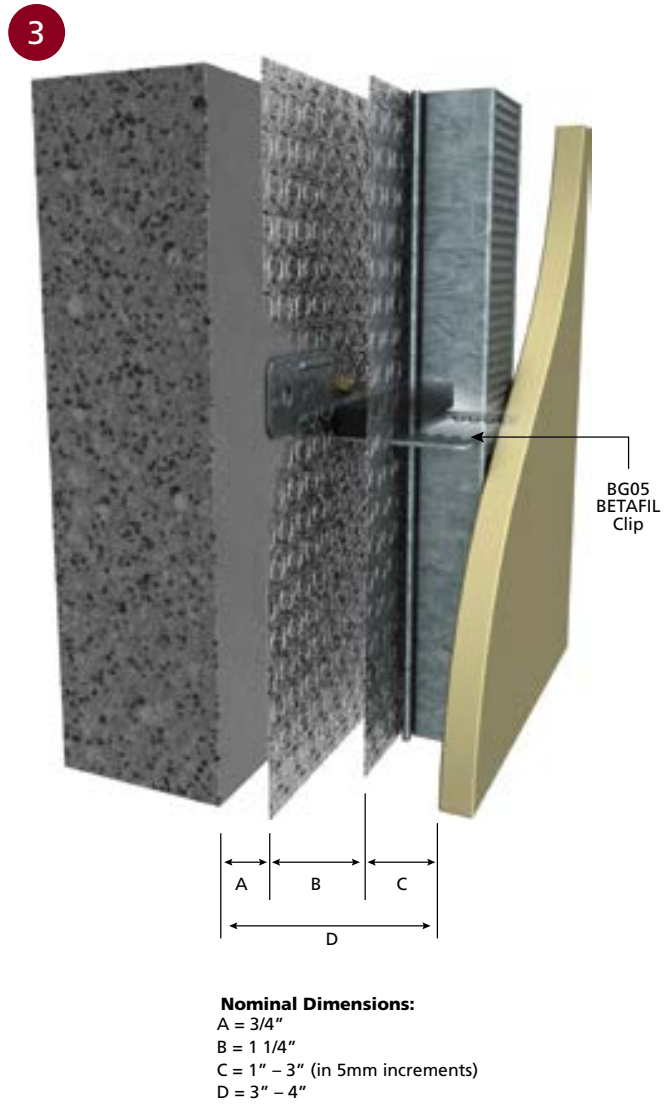
Unlike the 282 clip, Furring Channel can be adjusted so that it is secured plumb by utilising the appropriate fixing teeth on the clip.

FIXING

The installer should consult the fixings supplier for the appropriate product to use depending on the structure.

Judah 282 and BETAFIL® clips are designed for internal use only and should be spaced at no more than 1200mm apart using 129 Furring Channel. These centres suit Furring Channel spaced at 600mm centres.

The insulation supplier can provide more information on insulation properties when using these clips.



Nominal Dimensions:

- A = 3/4"
- B = 1 1/4"
- C = 1" - 3" (in 5mm increments)
- D = 3" - 4"

■ BG05 DIRECT FIX CLIP IN SITU